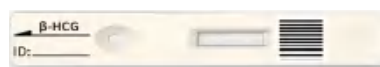




Hormones

Human Chorionic Gonadotrophin

β -HCG



Advantages

- ◆ Detection range up to 200,000 without diluting.
- ◆ Hook-effect avoided
- ◆ Complete reference interval and clear indicators for each period.

Application

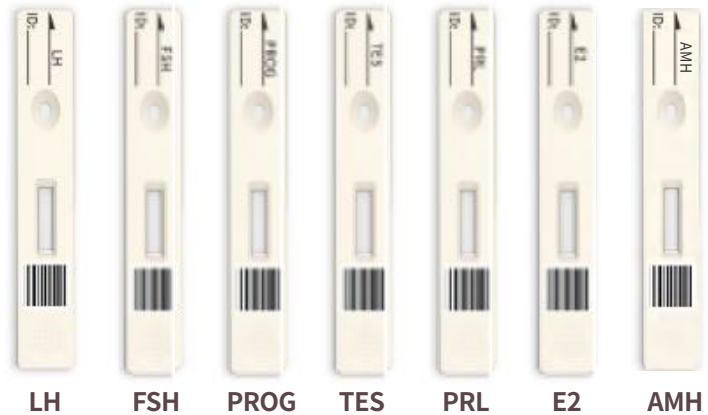
Pregnancy Monitoring;
Trophoblastic Diseases;
Ectopic Pregnancy;
Abortion and Prevent Miscarriage, etc.

Sex Hormones

Single Panel Test Cartridge

Advantages

- ◆ Easy to use, Test results in 10-20 minutes.
- ◆ Wide detection range.
- ◆ Different specifications to meet different needs.
- ◆ Easy to delivery without cold chain requirement.
- ◆ Six kinds parameters for sex hormones.



Application

Application: Endocrine Disorders, Ovarian Cysts, Precocious Puberty, Pregnancy Monitoring, Infertility, etc.

3 in 1 Test Cartridge

Advantages

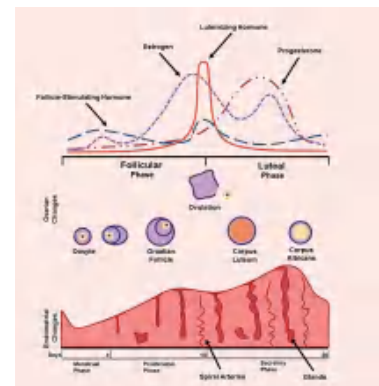
- ◆ Easy to operate, with wide detection range.
- ◆ 3 results in one test in 20 minutes.
- ◆ Easy to delivery without cold chain requirement.



FSH/LH/PRL

Testing Time

- ◆ **Menstrual Phase(2nd to 3rd days in menstrual cycle):**
Checking the ovarian condition and endocrine level.
- ◆ **Ovulation (11st to 15th days in menstrual cycle):**
Checking the growth of follicle and intima, whether to ovulate in time.
- ◆ **Luteal Phase(22nd to 25th days in menstrual cycle):**
Checking the function of luteum and ovulation.



Products Performance

Test Item	Specimen Type	Reaction Time	Linear Range	Qualification
β-HCG	Serum/Plasma	10min	5-200000mIU/mL	NMPA CE ISO13485
PROG	Serum	10min	0.3-80ng/mL	NMPA CE ISO13485
TES	Serum	10min	0.2-20ng/mL	NMPA CE ISO13485
FSH	Serum	20min	0.3-200mIU/mL	NMPA CE ISO13485
LH	Serum	20min	1-200mIU/mL	NMPA CE ISO13485
PRL	Serum	20min	1-4000μIU/mL	NMPA CE ISO13485
E2	Serum	10min	10-3000pg/mL	NMPA CE ISO13485
3 in 1(FSH/LH/PRL)	Serum	20min	same as individual	NMPA CE ISO13485
AMH	Serum/Plasma	10min	0.1-25ng/mL	CE ISO13485